

Alcester - Bidford on Avon - Welford on Avon - Kinwarton - Aston Cantlow - Temple & Ardens Grafton - Salford Priors - Great & Little Alne - Wilmcote - Haselor - Dunnington - Billseley - Weethley - Rushford

INCIDENT OVERVIEW

Incidents recorded for the Alcester South Safer Neighbourhood Team for June 2011:

<i>Incident Type</i>	<i>JUNE 2010</i>	<i>JUNE 2011</i>	<i>LAST MONTH</i>
Anti Social Behaviour	30	30	17
Burglary Dwelling (Houses)	3	4	7
Burglary Other (Out buildings)	4	10	26
Criminal Damage	19	14	7
Theft from Motor Vehicle	12	11	5
Theft of Motor Vehicle	2	3	0
Violence	13	6	6

* Figures correct as of Friday 1st July 2011

CRIME IN YOUR AREA

This section looks at the crimes of public interest that have occurred on the Alcester South Safer Neighbourhood Team policing beat, crimes such as burglary, theft, auto crime and criminal damage:



BURGLARY.

- Burglaries across the area thankfully down significantly on the previous month.
- Again it's the usual bits and pieces that are taken, power tools, and other petrol driven garden equipment, however, a shed load of fishing tackle was taken from a garden on Millers Close in Welford, (inc 299 of 2nd June 2011), so please keep those sheds locked up and secured.
- 16 Peking Bantams (small chickens) were taken from the rear garden of a house on Headlands Rd, Welford, (inc 49 of 7th June 2011). U/K offenders have taken these birds from a coup overnight and the IP believes they may have been taken to order for Stratford on Avon livestock market the following day.



AUTOCRIME.

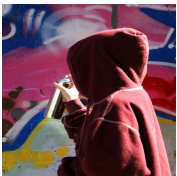
- Thefts from vehicles up slightly this month, with number plates being one of the main targets as well as a few commercial vehicles having fuel tanks drained and the diesel being taken.

- A BMW parked up in Henley Court, Alcester on Saturday 11th June 2011 (inc 127 of 12th June 2011) had magnolia paint thrown over the whole car whilst the owner had left it overnight.
- There have been a number of calls to a VW Transporter Van parked on Saxonfields in Bidford that has been scratched on a few separate occasions through June 2011.



THEFT.

- Metal thefts continue to be a big concern across the area, with buildings with lead roofs still being the No1 target.
- Schools and businesses in and around Alcester have been worst hit with some places being targeted a number of times through June 2011.
- There have also been a number of thefts of gully covers from roads across the area, especially around Salford Priors, Dunnington and Broom. We have about 75 reported to date. The average cost to replace each gully cover is approx. £140 yet they only fetch about £6 each as scrap!!
- There have been a number of thefts and attempted thefts of straddle stones (concrete toad stools) around Welford, Long Marston and Dorsington. These are approx. £500 each. On each occasion a grey/silver VW Transporter with writing on the side has been seen. Police are following up on a number of lines of enquiries and hope to have some good news in the next edition.



CRIMINAL DAMAGE.

- A slight rise this month in terms of Criminal Damage.
- There have been a few reports of damage to sheds at the allotments behind Crawford Hall in Bidford, where it appears youths have forced entry into the sheds to have a drink and a smoke.
- There have also been a few reports of youths having small fires in the abandoned United Carriers building on Waterloo Rd, Bidford.
- Other damage jobs relate to the building work that is ongoing on the Conway Fields at the Pavilions.



ANTI SOCIAL BEHAVIOUR (ASB)

- No calls to the Police this month for incidents on the Big Meadow in Bidford. As this is community priority, residents should hopefully see a continued Police presence, and with the school holidays soon upon us, this will continue throughout the holiday period.
- There have been a few calls to the Conway Fields in Alcester and especially the Pavilions where kids are playing around in amongst the building work.
- The area around the Hopkins Precinct has been targeted as a community priority and officers will be spending time in the area, although the past month hasn't seen too many incidents reported.
- We have received a few calls about the school playing fields at Welford Junior & Infant school where youths are drinking and littering and on one occasion causing small damage to a school building.
- The perennial problem of motorbikes/scramblers in Broom using the public right of way from Broom to Wixford has surfaced again. It is believed these people aren't always local to the area, as vans have been seen loading bikes up at either end of the trail. If people see any vans loading up bikes, and they can safely do so, please try and clock the car registration.

WE NEED YOUR HELP...

No appeals for witnesses this month, but please be vigilant and report anything you think is suspicious.

INFORMATION AND ADVICE

How to prevent metal thefts.

With metal thefts going on all around the area, it's worth looking again at ways to make your properties and businesses as secure as possible.

- Conduct a "recce" of your premises - especially the external areas and the fabric of the building.
- What metal items do you possess or are part of the building?
- How easy would it be for a thief to steal?
- Lead flashing and copper piping are especially attractive to thieves?
- Lock garden sheds, gates and doors.
- Consider ground anchors to secure large metal items inside sheds and other out buildings.
- Remove or padlock and chain any ladders, beer kegs, wheelbarrows, shopping trolleys, wheelie bins and any other such objects that are near to your buildings.
- Prune back or even remove overhanging shrubs, bushes or trees that could aide thieves in climbing or even hide their activities.
- Use anti-vandal paint two metres high - together with a warning notice. Such paint can be used on drainpipes, roofs and guttering etc. to "target harden" you property.
- Property mark and photograph metal items (including high value metal items such as statues, garden urns, seats and fountains), in order to help with identification if they are taken and then recovered.
- Remember to challenge and report suspicious people you see up to no good in your area.
- Look at buying an alarm or PIR security lights for your garden and around your property.
- Businesses could consider installing CCTV with a minimum seven day, real time recording facility.



Metal	Price per tonne for scrap*
Lead Scrap	£900
Zinc Mixed Scrap	£600
Copper wire	£4000
Brass cuttings	£2900
Old Rolled Aluminium	£800



*Figures correct as of 5th July 2011. Source: <http://www.letsrecycle.com/prices/metals>

ALCESTER SOUTH SAFER NEIGHBOURHOOD PRIORITIES

The top issues raised at the Community Forum held at St Benedict's School, Alcester on Tuesday 21st June 2011 were...

1. **Targeted foot patrols in known "hotspots" to tackle anti social behaviour in Alcester.** Carry out an additional 15 extra patrols paying specific attention to the Hopkins Precinct and Alne Bank day

care centre, and other such areas where Anti Social Behaviour is an issue. 6/15 extra patrols done so far.

2. **Targeted foot patrols on The Big Meadow play area in Bidford to tackle anti social behaviour.** To carry out 15 additional patrols around the Skate park area to prevent Anti Social Behaviour, especially after school, and during holiday times. 9/15 extra patrols done so far.
3. **High profile patrols to prevent lead thefts around Alcester and surrounding villages.** To carry out 15 additional checks at likely targets across the area such as Schools and units on the Industrial Estates. 5/15 checks done so far.

FIGURES CORRECT AS OF 6TH JULY 2011.

DATE OF THE NEXT MEETING IS TUESDAY 13TH SEPTEMBER 2011 AT THE PARISH MEETING ROOMS, BRAMLEY WAY, BIDFORD AT 7:00PM.

GOOD NEWS

- 2 prolific shoplifters were arrested at Budgens Store in Bidford on Wednesday 29th June 2011 for taking bottles of vodka and whiskey. Having earlier taken a couple of bottles, the two, a male and female in their 40's with a history of drug and shoplifting offences returned and were arrested as they tried to leave the store for the second time with bottles concealed about their person. Both are now waiting their day in court.
- A local youth was arrested following an attempted lead theft from an address on Alcester Heath on Wednesday 13th June 2011. He was found after hiding on Arden Road, Industrial Estate in Alcester and questioned and released on bail and following enquires another local youth was also arrested in connection with lead thefts. He is also on Police Bail.
- Officers from Alcester attended a Cross Borders meeting at Evesham Police Station with colleagues from Thames Valley, West Mercia, and Gloucestershire Police. This was to share intelligence and look at ways we can help each other tackle crime along our borders.

MEETINGS/EVENTS

- Police Surgery with PCSO Becky Morris Thursday 14th July 2011 09:30 - 10:45hrs at Waitrose and 11:00 - 12:00hrs on the High St, Alcester.
- Police Surgery with PCSO Becky Morris Friday 15th July 2011 09:30 - 10:45hrs at Hopkins Precinct, Kinwarton Road, and 11:00 - 12:00hrs on the High St, Alcester.
- Police Surgery at Wilmcote Village Store with PCSO Becky Morris, Tuesday 19th July 2011 starting at 16:30 - 17:30hrs.
- Police Surgery at Waitrose, Alcester with PCSO Andy Hyman, Tuesday 26th July 2011 running 10:00 - 11:00pm.
- Great Alne Parish Council meeting at Great Alne Primary School Monday 11th July 2011 at 19:00hrs.
- Bidford Rural Cinema. Crawford Hall, Bidford, on Friday 22nd July 2011 at 19:00hrs. "Rabbit Hole" (12A) Tickets £2.50.
- Bidford Parish Council Surgery, Saturday 16th July from 10:00hrs to 11:30hrs at the Parish Meeting rooms, Bramley Way, Bidford.
- On Tuesday 12th July, Officers from Alcester will be running the Alcester Gaming Project in the community room at St. Benedicts RC High School from 19:00hrs - 21:00hrs.

MONTHLY MESSAGE:

"Both West Mercia and Warwickshire Police Authorities have unanimously accepted the professional recommendations of Warwickshire Chief Constable Keith Bristow and West Mercia Chief Constable-designate David Shaw to deliver all policing services across both force areas."

Source: <http://www.warwickshirepa.gov.uk/>

CONTACTING US:

If you wish to speak with an officer about a non-urgent matter, please use the list of contacts below:

Alcester South Safer Neighbourhood Team
Alcester Police Station
Priory Road
Alcester
Warwickshire
B49 5DZ

FOR GENERAL ENQUIRIES:

If you wish to report lost/found property or for general enquires please call at *Globe House* in Alcester next door to the Police Station:
Open Monday - Friday 09:00 - 17:00

Globe House
Priory Road
Alcester
Warwickshire
B49 5DZ

To contact the Safer Neighbourhood Team about a non-urgent matter, please telephone:
01789 762207 or leave a Voicemail on **01789 444816** alternatively E-Mail us at:
alcestersouth.snt@warwickshire.police.uk

**PLEASE DON'T BE AFRAID TO REPORT THINGS YOU AREN'T HAPPY
WITH OR ARE SUSPICIOUS OF. WE CAN'T HELP IF WE DON'T KNOW
WHAT THE PROBLEMS ARE.**

YOUR NEW SAFER NEIGHBOURHOOD TEAM

PS 542 Bob SHAW (Team Sergeant)



Email: Robert.shaw@warwickshire.police.uk

Voicemail: 10542

PC 781 Pete ESSEX (Beat Manager for the whole of Alcester South Area)



Email: peter.essex@warwickshire.police.uk

Voicemail: 10781

Mobile: 07979 704373 or 07823 533488

PCSO 6179 Pete GROOM (Bidford, Welford, Temple Grafton, Salford Priors)



Email: peter.groom@warwickshire.police.uk

Voicemail: 16179

Mobile: 07823 533488

PCSO 6093 Becky MORRIS (Alcester, Kinwarton, Aston Cantlow, Great Alne)



Email: rebecca.morris@warwickshire.police.uk

Voicemail: 16093

Mobile: 07979 704373

PCSO 6236 Andy HYMAN (Alcester, Kinwarton, Aston Cantlow, Great Alne)



Email: andrew.hyman@warwickshire.police.uk

Voicemail: 16236

Mobile: 07979 704373

*The team mobiles are only turned on when the Officer is on duty. If there is no reply, then please leave a voicemail, but if your call is urgent or needs an immediate response, then either call 999, or the non emergency number, 01926 415000

www.safer-neighbourhoods.co.uk